

APARTMENT FOR RENT, street K Sídlišti, Praha 4 - Podolí

Benefiting from great location and wonderful views, this beautifully designed 2 - bedroom apartment is situated on the 11th floor of a first class residence Kavčí Hory built in 2009. The Residence Kavčí Hory has been designed in such a way as to provide a unique view of the Vltava River, the historical part of Prague and the Central Park. The twelve-storey apartment building thanks to its unique opening, evokes a smooth continuation of the adjoining natural park into the green area of the prestigious residential district as it slopes down to the Vltava River. To a large extent, the project exploits the combination of luxurious and state-of-the-art materials in the interiors, using natural stone on the facade, glass and an exotic wood feature on its terraces.

The layout of the flat enables comfortable living. With top materials and appliances, the flat has a large open plan living room with dining area, fully fitted kitchen with top-of-the-range appliances, 2 good size bedrooms complemented by terraces overlooking Central Park, 3 balconies (5,4 m², 4,8 m², 4,8 m²). Additionally the flat has walk-in closets, utility room with adequate storage space, closet space, etc. The apartment has been designed with fully glazed windows in aluminium frames with outdoor Venetian blinds. Air-conditioning, hard wood floors throughout, basement storage 15 m². All materials used are of top quality. You can receive your guests in the comfort of a spacious entrance hall with a 24-hour reception service that guards your security, using a state-of-the-art closed-circuit TV monitoring system. The reception also provides you with other services currently standard for residential living. Three underground storeys offer sufficient parking spaces with wheelchair access and basement storage cubicles assigned to individual flats.

1x 2x

49 000 CZK
+Monthly fees 9 000 CZK

Specification

Area: 115 m²
Bedrooms: 2
Bathrooms: 1
Floor: 11th floor

- ☒ Lift
- ☒ Concierge service
- ☒ parkovací stání
- ☒ Balcony
- ☒ Storage room (15 m²)

Estate id: 3861

Web link:

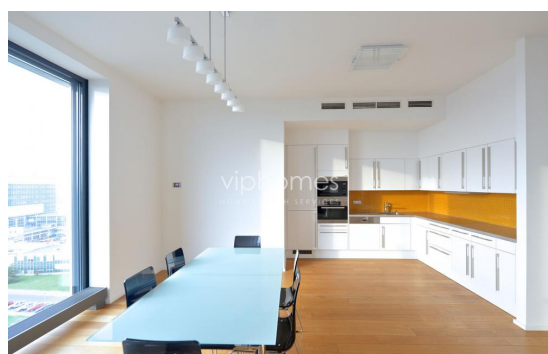
www.viphomes.cz/3861

Agent:

Mária Mihinová

Phone: +420 606 731 973, Email: viphomes@viphomes.cz

Prague 4 currently ranks among the Prague's most sought-after localities, both due to its top quality housing and because of the presence of major companies that have their registered offices in the newly built office centres. The adjoining Central Park is at the same time a much-loved oasis of peace, walks, relaxation and sports.



Estate id: 3861

Web link:

www.viphomes.cz/3861

Agent:

Mária Mihinová

Phone: +420 606 731 973, Email: viphomes@viphomes.cz