

APARTMENT FOR RENT, street Na Švihance, Prague 2 - Vinohrady

A beautifully presented 3 bedroom, 2 bathroom apartment set on the 3rd floor of a newly refurbished period building, quietly located, yet within close reach of Nám. Jiřího z Poděbrad metro station. You are ideally placed for easy access to locations throughout central Prague, including Prague's main transport hubs and just a short stroll away to the coffee shops, café bars, innovative restaurants, theatres, shops and full civic amenities. The nearest tube station is Jiřího z Poděbrad Square boasting excellent transport links.

Combining elegance with tradition the flat offers the very best in quality and finish throughout, featuring an expansive living room, fully equipped kitchen, a master bedroom with an ensuite bathroom, walk-in closets, two further bedrooms, a family bathroom, and a large entrance hall. The apartment benefits from high standard, neutral decoration, additional storage and plenty of natural light.

Main features: high ceilings, large windows, renovated parquet flooring, marble tiled floors in the bathrooms, washer, dryer, ceramic hob, dishwasher, Cable and satellite TV. Tenant's fees: utility/service charges 8 500 Kč/month. Optional secure parking at extra fee: 5.000 Kč + VAT. Available for long term rentals 68 000 Kč / 2 768 EUR. Furnished or unfurnished.

Available September 8, 2025.

2x 3x

68 000 CZK
+Monthly fees 8 000 CZK

Fee Information 1 month rent + 21 % VAT.

Specification

Area: 140 m²
Bedrooms: 3
Bathrooms: 2
Floor: 3rd floor

- ☒ Lift
- ☒ Internet
- ☒ Dryer
- ☒ Balcony
- ☒ Washing machine

Estate id: 2582

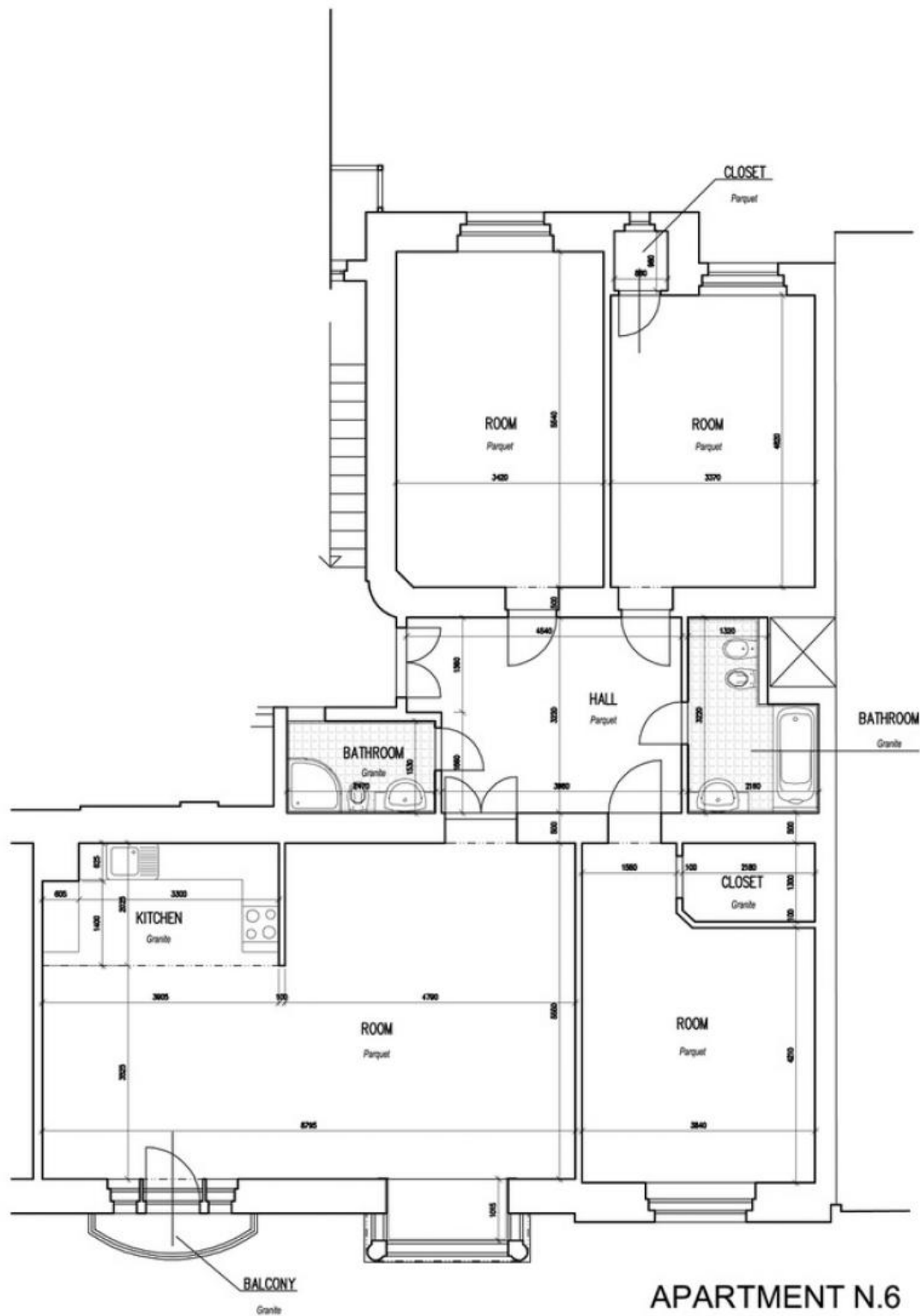
Web link:

www.viphomes.cz/2582

Agent:

Mária Mihinová

Phone: +420 606 731 973, Email: viphomes@viphomes.cz



APARTMENT N.6
THIRD FLOOR
1:100